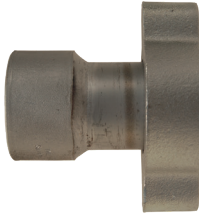


Boss Adapters

Female NPT

Features

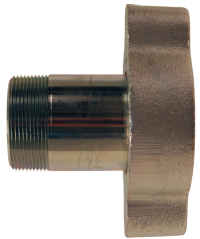
- Designed to fit the standard ground joint spuds on pages 154 - 155
- Supplied with a wing nut, as shown
- For safety tags and safety tape, see page 1065



Size	Plated Steel and / or Iron Part #	316 Stainless Steel Part #
3/4"	GFAS6	RGFAS6
1"	GFAS11	RGFAS11
1-1/4"	GFAS16	---
1-1/2"	GFAS21 ¹	---
2"	GFAS26	---
3"	GFAS36	---
4"	GFAS46	---

¹ Part is produced as a welded fabrication

Male NPT




Size	Plated Steel and / or Iron Part #	316 Stainless Steel Part #
3/4"	GMAS6	RGMAS6
1"	GMAS11	---
1-1/4"	GMAS16	---
1-1/2"	GMAS21	---
2"	GMAS26 ¹	---
3"	GMAS36	---
4"	GMAS46	---

¹ Uses a special wing nut, part # B27-1

Boss Wing Nut Caps

Features

- Supplied with 12" chain and washer
- For best results, use with washer style spuds and washers on page 158
- Not intended for pressure applications 



Size	Plated Steel and / or Iron Part #	316 Stainless Steel Part #	Opt Qty
1/2"	B2SC	---	10
3/4" and 1"	B12SC	RB12SC	25
1-1/4" and 1-1/2"	B17SC	---	25
2"	B27SC	---	10
3"	B37SC	---	5