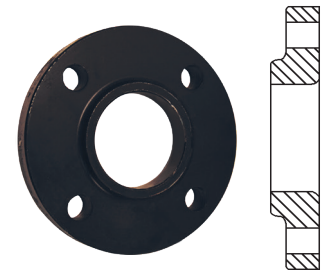


150 Lb. ASA Forged Lap Joint Flanges

Features

- No raised face
- Commonly called a Van Stone or a floating flange

Size	Number of Bolts	Carbon Steel Part #	316 Stainless Steel Part #
1"	4	LJ100	---
1-1/4"		LJ125	---
1-1/2"		LJ150	LJR150
2"		LJ200	LJR200
2-1/2"		LJ250	---
3"	8	LJ300	LJR300
4"		LJ400	LJR400
5"		LJ500	---
6"		LJ600	LJR600
8"		LJ800	---
10"	12	LJ1000	---
12"		LJ1200	---

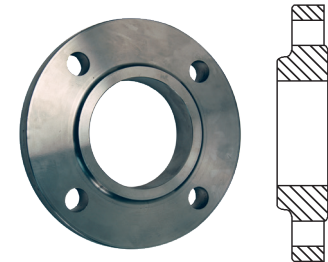


150 Lb. ASA Forged Slip-On Flanges

Feature

- Raised face

Size	Number of Bolts	Carbon Steel Part #	316 Stainless Steel Part #
1"	4	SO100	---
1-1/4"		SO125	---
1-1/2"		SO150	SOR150
2"		SO200	SOR200
2-1/2"		SO250	---
3"	8	SO300	SOR300
4"		SO400	SOR400
5"		SO500	---
6"		SO600	SOR600
8"		SO800	---
10"	12	SO1000	---
12"		SO1200	---

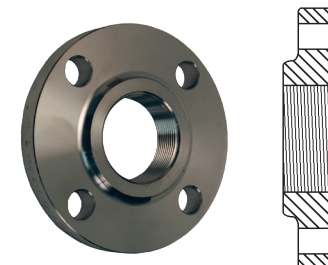


150 Lb. ASA Forged NPT Threaded Flanges

Feature

- Raised face

Size	Number of Bolts	Carbon Steel Part #	316 Stainless Steel Part #
1"	4	T100	---
1-1/4"		T125	---
1-1/2"		T150	TR150
2"		T200	TR200
2-1/2"		T250	---
3"	8	T300	TR300
4"		T400	TR400
5"		T500	---
6"		T600	TR600
8"		T800	---
10"	12	T1000	---
12"		T1200	---



NOTE: For flange dimensions, diagrams and additional information please reference dixonvalve.com.