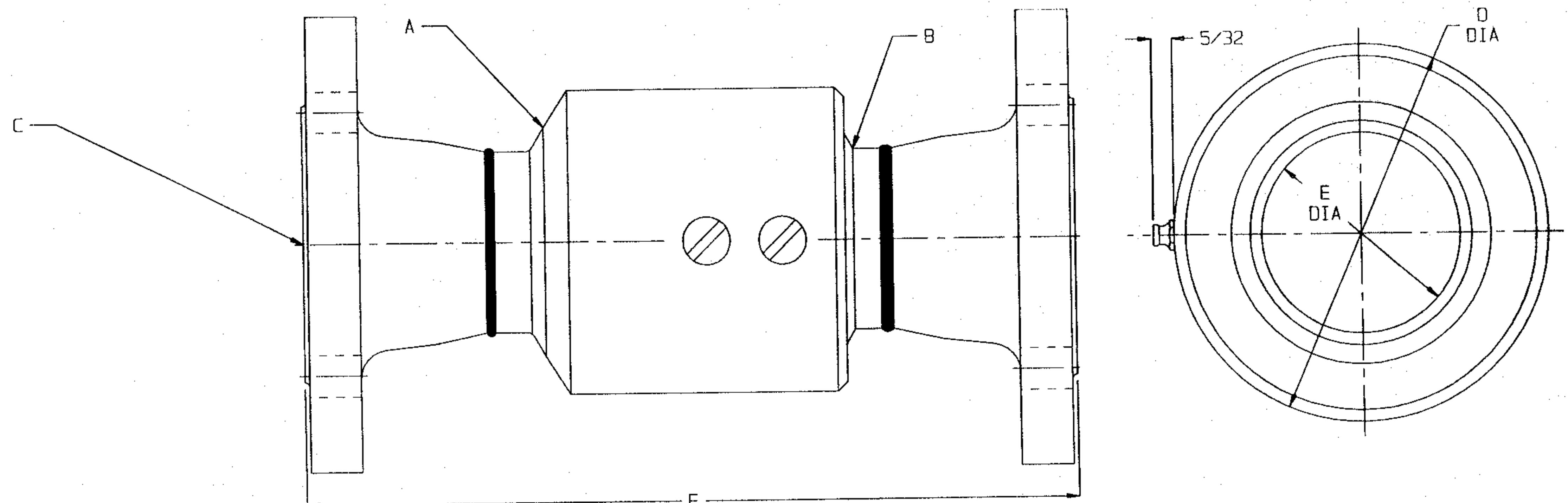


792171CU

6/9/09

CUSTOMER DWG



220FGXFGCS	2BDCS	2SLCS	WN200	6	2	10 5/16	4 3/4	4
220FGXFGSS	2BDSS	2SLSS	WNR20015	6	2	10 5/16	4 3/4	4
320FGXFGCS	3BDCS	3SLCS	WN300	7 1/2	3	11 1/4	6	4
320FGXFGSS	3BDSS	3SLSS	WNR30015	7 1/2	3	11 1/4	6	4
420FGXFGCS	4BDCS	4SLCS	WN400	9	4	13	7 1/2	8
420FGXFGSS	4BDSS	4SLSS	WNR40015	9	4	13	7 1/2	8
620FGXFGAL	6BDAL	6SLAL	WNAL60015	11	6	15 3/8	9 1/2	8
620FGXFGCS	6BDCS	6SLCS	WN600	11	6	15 3/8	9 1/2	8
620FGXFGSS	6BDSS	6SLSS	WNR60015	11	6	15 3/8	9 1/2	8
820FGXFGAL	8BDAL	8SLAL	WNAL80015	13 1/2	8	16 5/8	11 3/4	8
820FGXFGCS	8BDCS	8SLCS	WN800	13 1/2	8	16 5/8	11 3/4	8
820FGXFGSS	8BDSS	8SLSS	WNR80015	13 1/2	8	16 5/8	11 3/4	8
PART #	A	B	C	D	E	F	BOLT CIRCLE	# HOLES



The Right Connection™

**AGREEMENT TO MAINTAIN CONFIDENTIALITY**

This drawing is owned by Dixon Valve & Coupling Co. and shall be returned upon demand. It is loaned on condition that it shall not be copied or reproduced or submitted to others without the owners consent. In accepting it subject to this condition the recipient further agrees that this drawing or any design detail or concept disclosed herein shall not be used in any way detrimental to or in competition with the Owner. If the recipient does not agree to the terms of this agreement, they shall return this drawing immediately.

CUSTOMER DWG

<b>DIXON VALVE &amp; COUPLING CO.</b>		
<b>U. S. A.</b>		
TITLE STYLE 20 FLANGE X FLANGE SWIVEL		
DRAWN BY: RNJ 3/7/94	CHECKED BY:	APPROVAL: JJB 8/9/96
MAT'L X20FGXFGXX	<b>792171CU</b>	